

Blackjack CX™

PoE Servers Powered by DW Spectrum® IPVMS

State-of-the-art hyper-optimized video management platform designed for ease, speed and efficiency.

Blackjack® CX™ 16-channel PoE NVR with 8 virtual channels — Up to 80Mbps

DW-BJCX4T-LX	DW-BJCX8T-LX	DW-BJCX16T-LX	DW-BJCX24T-LX	DW-BJCX32T-LX	DW-BJCX40T-LX
--------------	--------------	---------------	---------------	---------------	---------------




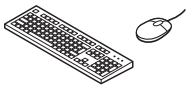

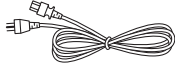
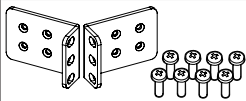
Default Login Information for DW Spectrum® IPVMS

Username: admin	Password: admin12345
------------------------	-----------------------------

Default login information for the server's OS

Username: dwuser	Password: Dw5pectrum
-------------------------	-----------------------------

WHAT'S IN THE BOX

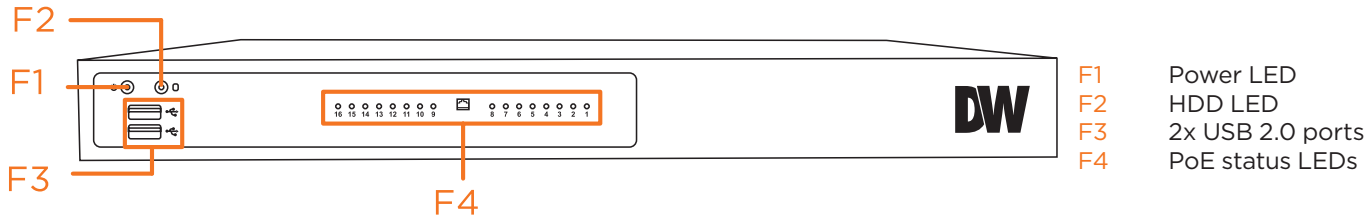
Blackjack CX™ server		1	Keyboard and mouse		1 set
Quick start guide		1	Power cable		1
19" rack mount ears (DW-BJCXRM) + 8 mounting screws		1 set			

NOTE: Download all your support materials and tools in one place.

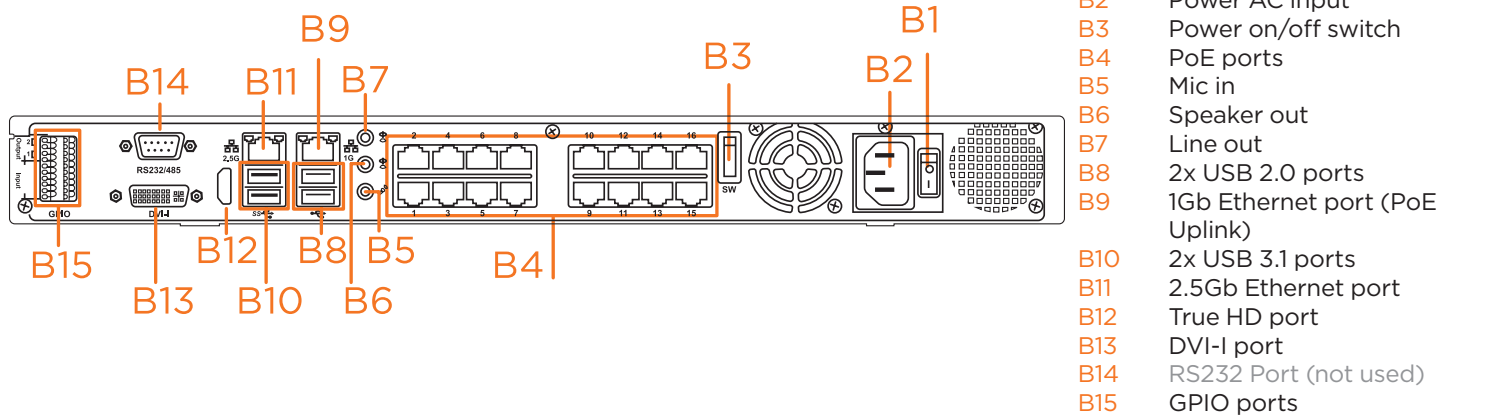
1. Go to: <http://www.digital-watchdog.com/support-download/>.
2. Search your product by entering the part number in the 'Search by Product' search bar. Results for applicable part numbers will populate automatically based on the part number you enter.
3. Click 'Search'. All supported materials, including manuals, Quick start guides (QSG), software and firmware will appear in the results.

Attention: This document is intended to serve as a quick reference for initial setup.
See the DW Spectrum® full manual for more information on features and functionality.

FRONT PANEL



REAR PANEL



Default Login Information for DW Spectrum[®] IPVMS

Username: admin	Password: admin12345
------------------------	-----------------------------

Default login information for the server's OS

Username: dwuser	Password: Dw5pectrum
-------------------------	-----------------------------

WARNING For an optimal system configuration, it is recommended that a UPS (Uninterrupted Power Supply) be used to power the setup.

Dual monitors are not recommended due to CPU performance. To connect two monitors to the server, go to the display setup to activate the second monitor.

SPECIFICATIONS

DESCRIPTION		DW-BJCX
Included IP licenses		4
Form factor		PoE standalone NVR
Operating system		Linux Ubuntu [®]
OS on SSD		Yes
CPU		Intel [®] processor
Memory		8GB
Ethernet port		2x gigabit Ethernet ports (RJ45)
Local PoE ports		802.3af support 16 ports x 10/100 PoE, 15W per port (240W max PSE)
Alarm in/out		4x alarm inputs / 2 alarm outputs via terminal block
Audio in/out		1x line-in / 1x line-out / 1 microphone input
Max supported cameras		16 PoE/PoE+ ports, 8 virtual channels, total 24 cameras
Max video storage rate (Mbps)		80 Mbps
Storage	Maximum HDD	2x 3.5" SATA HDD, up to 40TB models
	USB interface	2x USB 3.1 ports, 4x USB 2.0 ports
Video-out	Outputs	1x true HD, 1x DVI-I for system configuration. 1 display output at a time.
Pre-loaded VMS software		DW Spectrum [®] IPVMS Server
Keyboard and mouse		Included
Rail kit		DW-BJCXRM 19" rack mount ears included. Wall mount rack available. Sold separately
Power supply		AC 100V-240V 410W**
Operating temperature		32°F-104°F (0°C-40°C)
Operating humidity		10-90% RH
Dimension (WxDxH)		16.92" (W) x 1.75" (H) x 13.7" (D) (430mm (W) x 44.5mm (H) x 348mm (D))
Other certification		NDAA, TAA
Warranty		5 year limited

* UPS recommended

Specifications and components mentioned are subject to change without notice.

SETTING UP THE SERVER

STEP 1: Connect external devices, power and network.

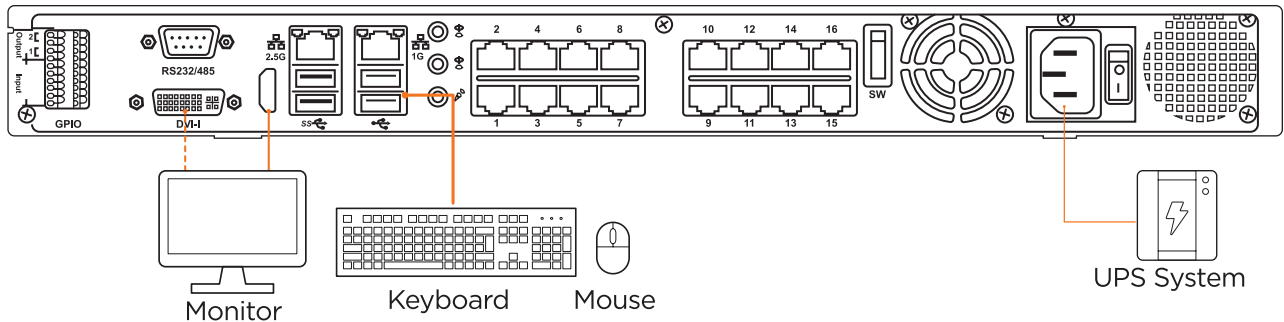
1. Connect a monitor, USB keyboard, USB mouse and the LAN side of the network cable to one 2.5Gb Ethernet port (B11 on the diagram). Connect the cameras to the PoE ports when the unit is fully booted to the OS.

NOTE See page 2 for detailed back panel breakdown for each model.

2. Connect the server to an appropriate power source. It is recommended to use a 750VA or higher UPS system.
3. Power up the server if the server does not turn on automatically by pressing the power button on the back of the server. (B3 on the diagram).

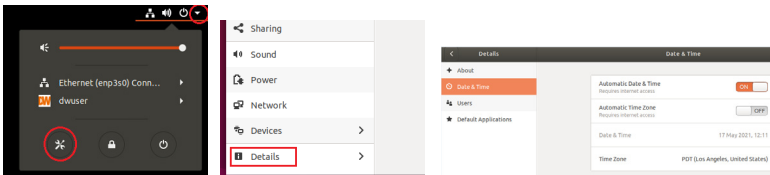
* Connecting the power cable to the live power source may turn on the server automatically.

** If the power does not turn on, verify the power supply switch is on.

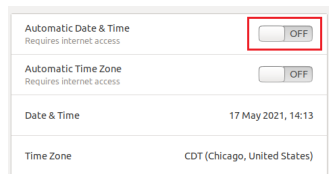


STEP 2: Configure the date and time

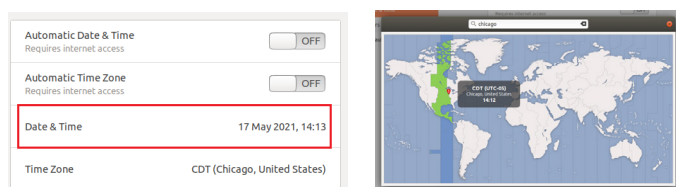
1. Open Settings > Details.
2. Click Date & Time.



3. Turn OFF Automatic Date & Time and Automatic Time Zone.



4. Click Date & Time and set the correct date and time.
5. Click Time Zone and set it to the correct Time Zone (type one of the largest cities in the time zone).



6. Close Settings.

STEP 3: Configure the network settings

Please have the following information ready before starting the network configuration.

	Camera network	Local network (enp5s0)
IP address	Auto assign from DHCP range 10.110.210.101 to 10.110.210.150	
Subnet mask / Netmask	255.255.255.0	
Default gateway / Gateway	Not applicable	
DNS servers	Not applicable	

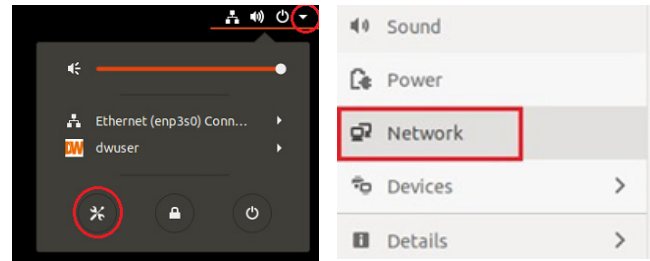
* Camera network and local network cannot be on the same network.

* Cameras connected to the PoE ports before boot-up may not need to power cycle the get IP assigned.

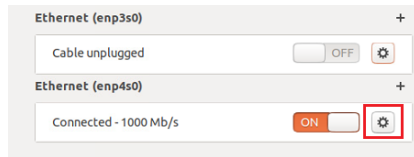
NOTE The Blackjack[®] server's network settings are set to DHCP as default.

NOTE If you are not sure what information to enter, contact your Network Administrator or Internet Service Provider for the information.

1. Open Settings > Network



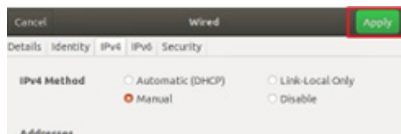
2. Click Setting of the Ethernet that is Connected.



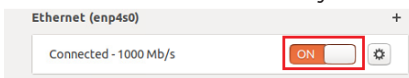
3. Change to Manual, then enter Address, Netmask and Gateway.

* Do not enter Gateway information if there is no Gateway in this network.

4. Click Apply to save.



5. Restart the connection by switching OFF, then turn it ON.

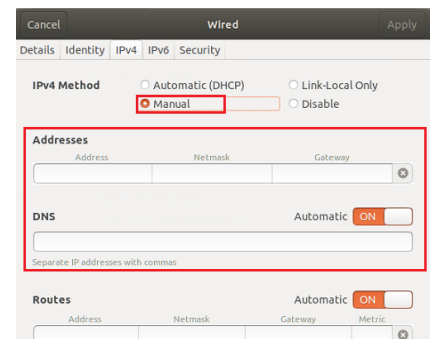


6. Click Settings of the Ethernet not connected.

7. Change to Manual, then enter Address, Netmask, Gateway and DNS.

8. Click Apply to save.

9. Connect the network cable and verify the connection.




NOTE If you are not connecting to the Blackjack[®] from the same network, you may be required to perform port forwarding on your router to access the server. Contact your Network Administrator or Installer for additional information

CONFIGURE CAMERAS USING DW® IP FINDER™

Refer to the camera's QSG to configure any DW® IP camera's IP address using DW® IP finder™.


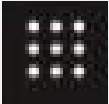
DW Spectrum® IPVMS client



LINUX-BASED SOFTWARE LAUNCH

OPTION 1: Double-click the DW Spectrum® desktop icon.

OPTION 2: Go to the dashboard on the top left side. Search 'DW'. Click the DW icon.

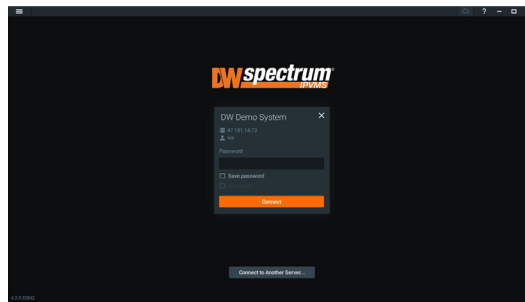
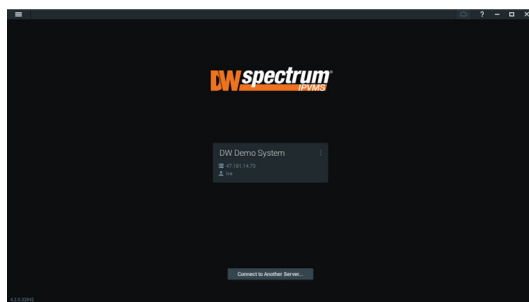



SETTING UP DW SPECTRUM® MEDIA SERVER

Login: **admin**
Password: **admin12345**

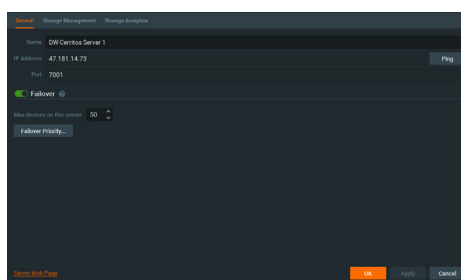
STEP 1: Initial run from the Blackjack® server

1. Open the DW Spectrum® client by double click on the DW Spectrum® icon.
2. Click on the pre-configured server.
3. If the pre-configured server does not automatically log in, enter the password and click Connect. *Default password: admin12345 (case sensitive).




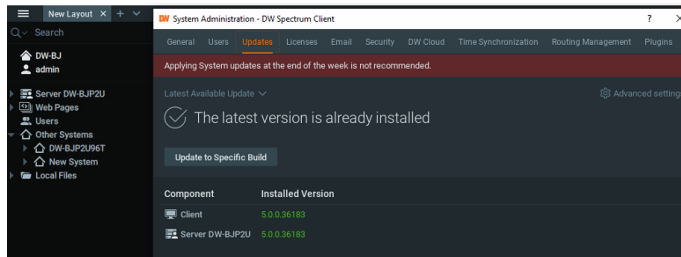
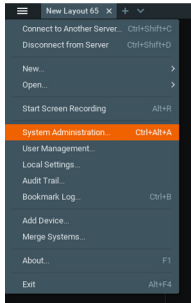
STEP 2: To rename the server

1. Right-click on the server name listed on the resources then click server settings.
2. Go to the general tab and enter the new server name in the name field. Click OK.

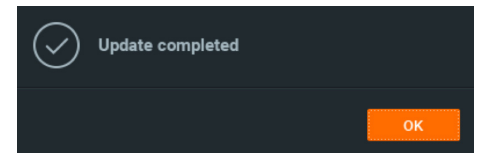
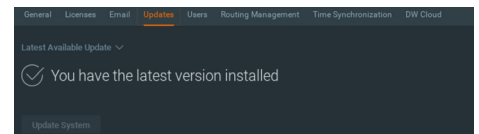


STEP 3: To check for updates

1. Click on the menu  then click “System Administration”.
2. Go to the updates tab. If the system requires updating, click on the update system button.



- * If you are on the latest version, it will say “You have the latest version installed” and the Update System button will be disabled.
3. Click OK when the update is completed.

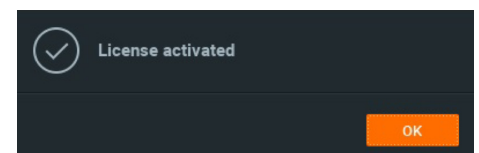
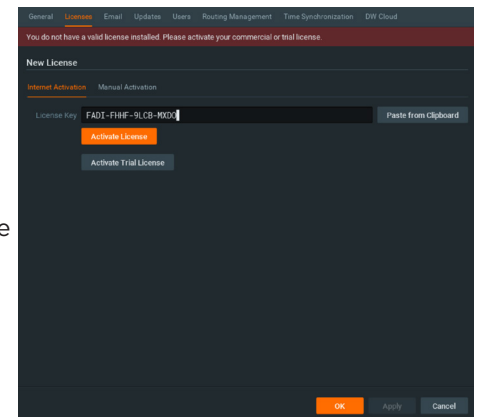


STEP 4: Enter and activate licenses

1. Go to the system administration window and click on the license tab.
2. Enter the license key and click “Activate License”. An Internet connection is required.

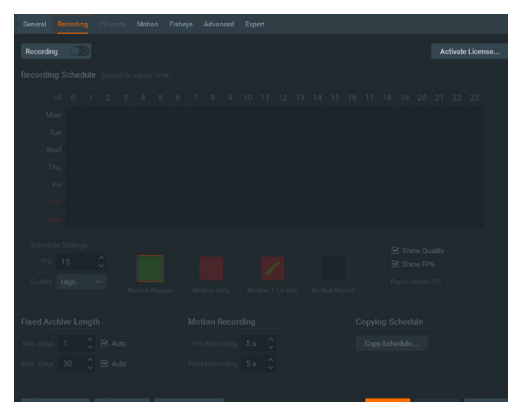
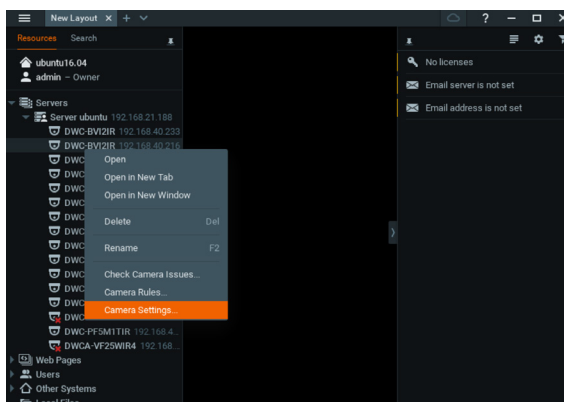
* Click on “Activate Trial License” if you have not purchased a valid license key.

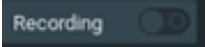
3. Click OK to when the license key is activated.

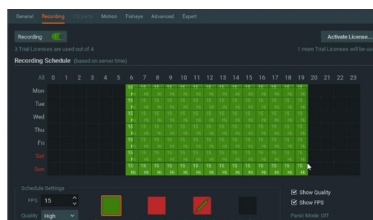


STEP 5: Configure recording

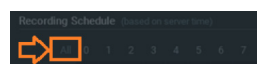
1. Right-click on a camera in the resource tree to setup recording. Click on camera settings from the context menu.
2. Go to the recordings tab.



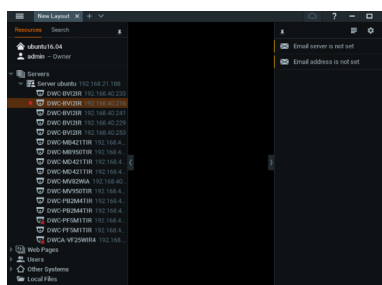
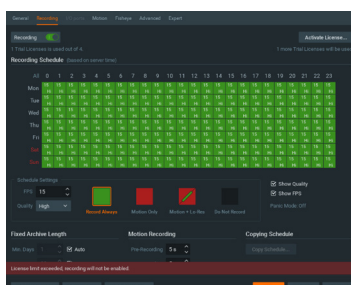
- Click  to turn on recording.
- Configure the camera's schedule settings for quality, FPS and recording type.
- Click and drag the mouse over the recording schedule to apply the settings to multiple days and times.



* Click "All" to apply the recording settings to the entire schedule.



- A red dot will appear next to the camera in the resource tree once recording is started.

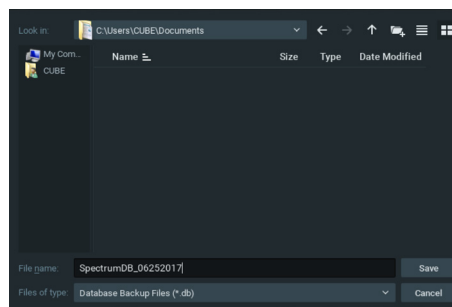
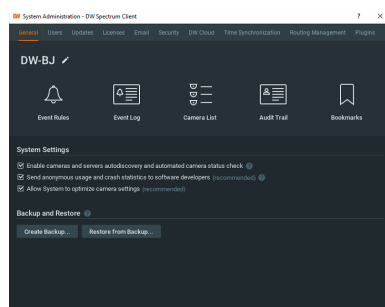


NOTE: A Recording License is required to allow each camera to the archive.

STEP 6: Backup database

- Go to the system administration window and click on the general tab.
- Click "Create Backup...".
- Navigate to the folder you want to save the database and enter a name for the backup file. Click save.

* It is strongly recommended to create a Database Backup to external storage media before and after every update in the event that a system restore point is needed.



NOTE: More information and instructions are available in the DW Spectrum® IPVMS user manual.

NOTE: This products is covered by one or more claims of the HEVC Patents listed at patentlist.accessadvance.com.

TROUBLESHOOTING TIPS

Problem	Possible solutions
My camera does not auto-discover	<ol style="list-style-type: none"> 1. Is the camera in the same LAN network as the media server? 2. Is your camera compatible with DW Spectrum? (Refer to our website for the complete list of supported cameras.) 3. Is the camera updated to its latest firmware? 4. If your camera is integrated with DW Spectrum via ONVIF, make sure ONVIF is enabled on your camera. 5. Try adding the camera manually. 6. Try rebooting the server after installation. Allow up to 2 minutes for the server to map your network and detect all supported devices.
Videos are slow	<ol style="list-style-type: none"> 1. Are you accessing the same cameras from multiple clients? (LAN and WAN) 2. Do you have a Gigabit network? Check your network speed.
My camera appears disconnected	<ol style="list-style-type: none"> 1. Under camera settings, make sure the username and password are correct. 2. Under the camera settings, use the 'Ping' button to ensure the camera is correctly connected to the network. 3. If you can connect to the camera's web viewer, try rebooting the camera and/or restoring it to factory default. 4. Ensure your camera is using the latest firmware available. 5. Ensure that the camera is connected to the same network as the server. 6. If you connect to a camera integrated with DW Spectrum via the ONVIF protocol (see list), ensure ONVIF is enabled. 7. Make sure your user has permission to view that specific camera.
I cannot get playback video from my camera	<ol style="list-style-type: none"> 1. Do you have a network connection between the client and the server (in case server and client are not on the same machine)? 2. Make sure your user has playback viewing permissions for the selected channel. 3. Ensure the camera is set to a recording mode that provides recorded video for the selected time and environment. 4. On the server side, check the media server log to make sure the camera you are trying to watch has not been unexpectedly disconnected.
I get an 'unauthorized' message on my camera	<ol style="list-style-type: none"> 1. Ensure the camera's username and password are entered correctly in the camera's general information under the camera settings menu. 2. If necessary, try rebooting the camera to apply the camera's username and password.

DW SPECTRUM SYSTEM REQUIREMENTS

Recommended specs for the full client

	Minimum	Recommended
Processor	Intel® i5 8th gen processor (or higher)	Intel® Core i7® 8th gen processor (or higher)
System RAM	8GB RAM	16GB RAM
Video card	Integrated Intel® graphics	GeForce® GTX 1650 or better
Network interface	2 x 1 Gbps	2 x 1 Gbps
OS Drive	256GB HDD	Dedicated 256GB SSD or larger
OS supported	Microsoft Windows OS (supported by both DW Spectrum® Server and Client). <ul style="list-style-type: none"> • Windows 10 • Windows 11 • Windows Server 2016 • Windows Server 2019 • Windows Server 2022 **NOTE: DW Spectrum for Windows can be installed as a software bundle, or the Server and Client software can be installed separately.	
	Ubuntu (Debian-based Linux) OS (supported by both DW Spectrum Server and Client). <ul style="list-style-type: none"> • Ubuntu 18.04 LTS "Bionic Beaver" • Ubuntu 20.04 LTS: "Focal Fossa" • Ubuntu 22.04 LTS: "Jammy Jellyfish" **NOTE: DW Spectrum for Ubuntu is only available for separate installations (not bundled).	
	Macintosh OS (supported only by the DW Spectrum Client. DW Spectrum Server is not available for macOS). <ul style="list-style-type: none"> • macOS 11.0, 11.1, 11.2 "Big Sur" • macOS 12 "Monterey" • macOS 12 "Monterey" • macOS 12 "Monterey" **NOTE: DW Spectrum for macOS is only supported by the DW Spectrum Client.	

* Except Storage Server version

Important: OS not listed will not be supported by DW® Tech Support.

Tel: +1 (866) 446-3595
Fax: (813) 888-9262



www.digital-watchdog.com
sales@digital-watchdog.com

Copyright © Digital Watchdog. All rights reserved.
Specifications and pricing are subject to change without notice.